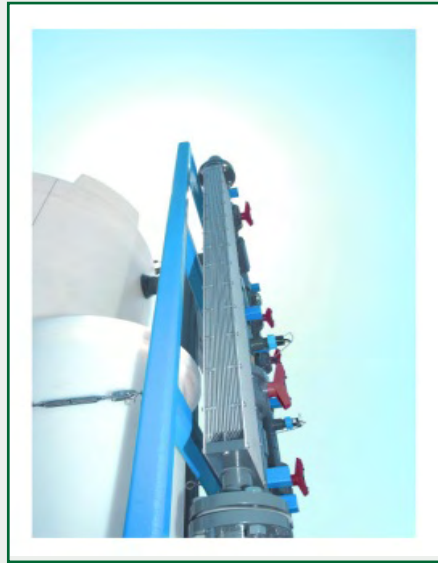


# MICROCLOR

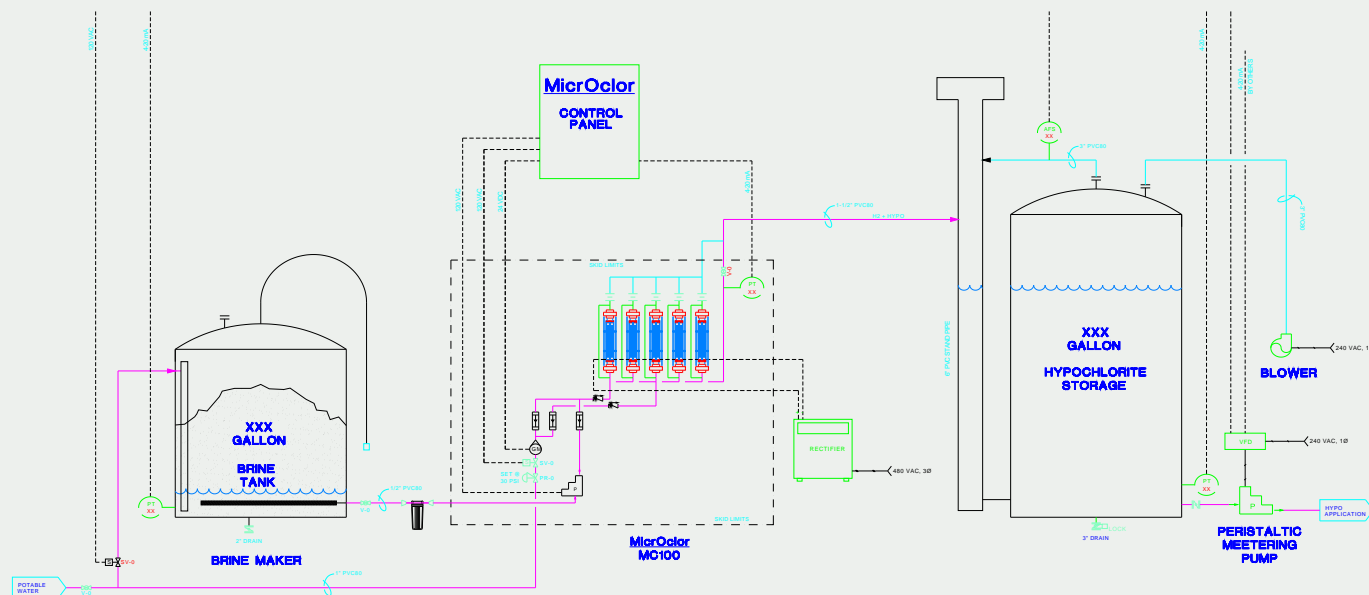


## Comprehensive Warranty

It is our policy to provide every customer with a state of the art, fully tested system. Each MicrOclor Hypochlorite Generation System carries a full three-year support agreement covering all parts and labor. In addition, the electrolytic cells are warranted on a prorated basis for years 4-7.

## Service & Support

PSI prides itself on our service and technical support. We offer complete support for your MicrOclor Hypochlorite Generation System- from initial training to troubleshooting, parts and repairs. If you need assistance, we're here to help.



### Represented by:

Vision Equipment

David Bartlett

830.755.8819

Bill Loyd

281.376.9828

www.visionequipment.net



**WATER AND WASTEWATER TREATMENT TECHNOLOGIES**

560 Division Street, Campbell, CA 95008

Telephone: (408) 370-6540 Fax: (408) 866-4660

Email: mail@4psi.net www.4psi.net

# MICROCLOR



**The Next Generation Onsite Hypochlorite Generator**



## Systems Capable of 20 to 1200 Pounds Per Day Chlorine Equivalent

It is well known that chlorine is a powerful disinfectant used in water treatment and plays a vital role in controlling bacteria and viruses that can cause human illness.

More stringent regulations for transportation and storage of bulk chlorine or pressurized chlorine gas have required many to search for alternative methods of disinfection.

Onsite generation of sodium hypochlorite alleviates the safety concerns associated with storing and using bulk sodium hypochlorite or chlorine gas.

The MicrOclor design incorporates all of the advantages of current industry standards while radically improving all safety aspects of the process

0.8% sodium hypochlorite is produced on demand by combining salt, water & electricity.



Salt + Water + Electricity = Hypochlorite + Hydrogen

The MicrOclor vertical format allows for the instantaneous passive removal of all hydrogen produced.



**WATER AND WASTEWATER TREATMENT TECHNOLOGIES**

Email: mail@4psi.net www.4psi.net

# MICROCLOR The Next Generation Onsite Hypochlorite Generator

- Low Cost Hypochlorite
- Enhanced Performance
- Small Footprint
- Service
- Safe
- Vertical Cell Design
- Immediate Hydrogen Removal
- Reduce Scaling
- Low Maintenance

The state of the art patent pending MicrOclor onsite hypochlorite generation system is a brand new design built upon twenty years of dedicated research and development in the field of onsite hypochlorite generation.

The design incorporates all of the advantages of current industry standards while radically improving all safety aspects of the process. Specifically, the manner in which hydrogen is removed from the electrolytic cell is a huge improvement over more conventional horizontal tubular designs.

The MicrOclor vertical format allows for the instantaneous passive removal of all hydrogen produced. The recirculating nature of the MicrOclor design provides for many benefits including reduced scaling potential, lower resistance, lower heat gain, lower chlorate formation and higher overall efficiencies. Further, PSI has perfected the ability to monitor flow in each cell compartment versus the overall process.

This ability to monitor compartmental flow when combined with the passive hydrogen removal system precludes the possibility of hydrogen entrapment.

Redundant dynamic pressure transducers have been included into the design and are fully capable of sensing a disruption in normal operating conditions, such as a broken pipe or mistakenly closed valve.

The MicrOclor design has taken into account every imaginable failure scenario including direct operator error in the handling of the process equipment.

Sequential operations logic is provided for all process variables where the change from standby to process is confirmed for all sensor locations at each start sequence. This auto diagnostic routine locks out generation in the event of sensor failure or electrical bypass.

MicrOclor hypochlorite systems meet requirements for 20 to 1200 pounds per day chlorine equivalent.

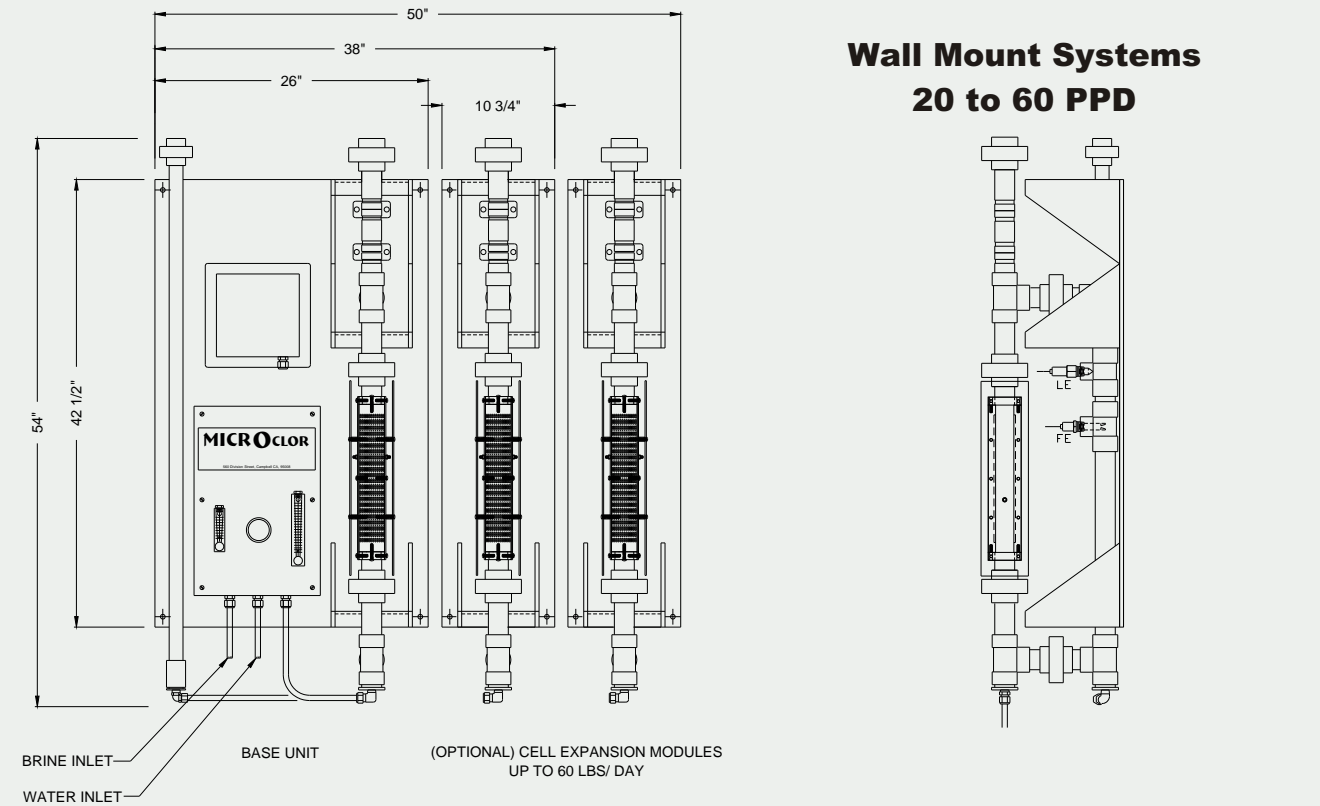
Applications include:

- Disinfection of potable water, wastewater, cooling towers, and swimming pools.
- Odor and corrosion control.
- Oxidation.

The MicrOclor is modular in design and based on standard components. These components may be customized to meet a wide range of requirements.

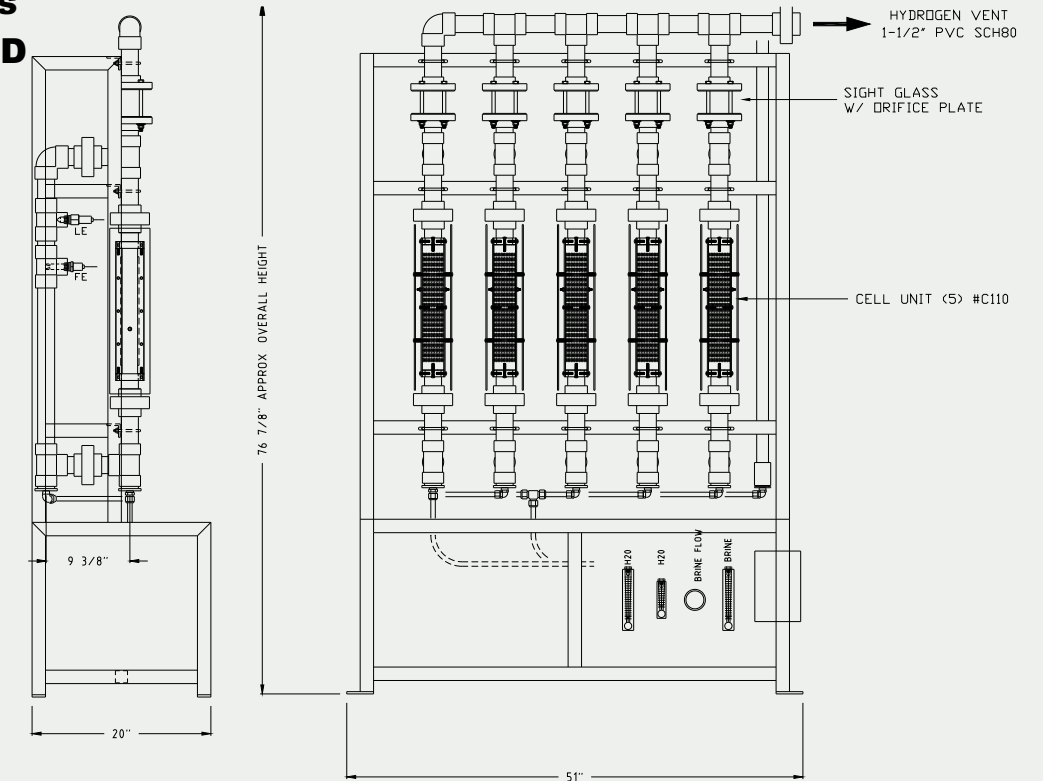
Standard components for the MicrOclor system include:

- Water Softener
- Brine Tank
- Brine Pump
- Electrolytic Cells
- Wall Mount PLC Control Panel
- Power Supply
- Hypochlorite Storage Tank
- Hypochlorite Metering Pump
- Hydrogen Dilution Blower



## Wall Mount Systems 20 to 60 PPD

## Rack Systems 80 to 1200 PPD



	Model/ Capacity	Cell Size	# of Cells	H2O GPM	Brine GPM	Brine mL/M	DC Amps	FLA 240-1 PH	FLA 480-3 PH
Wall Mount	20	2 x 12	1	0.2	0.02	62	30	8	
	40	2 x 12	2	0.4	0.03	125	60	16	
	60	2 x 12	3	0.6	0.05	189	90	25	7
Rack	80	2 x 12	4	0.8	0.07	250	120	33	10
	100	2 x 12	5	1	0.08	312	150		12
	200	4 x 12	5	2	0.17	625	300		24
	300	6 x 12	5	3	0.25	946	450		26
	600	6 x 24	5	6	0.50	1893	900		71
	900	6 x 36	5	9	0.75	2839	1350		107
	1200	6 x 48	5	12	1.00	3785	1800		143

**Capacities:** 20-1200 pounds per day free available chlorine.  
**Control:** Automatic, regulated by storage tank level.  
**Percentage Sodium Hypochlorite:** 0.8 ± 0.05  
**Consumables per pound of chlorine produced:**  
 3lbs salt, 2KWH (AC), 15 gallons water.  
**Water Input:** Potable water, 30-80 PSI, 40°F-80°F (5°C-27°C)  
**Salt:** 99.7% pure dry weight Morton White Crystal or equivalent.

**Power:** 20-80ppd systems - 208V or 240V AC, 1PH, 60HZ  
 60-1200ppd systems- 480V, 3PH, 60HZ  
**Control Cabinet:** 304 stainless steel NEMA 4  
**Operator Interface:** 6" Touchscreen  
**Programmable Logic Controller:** Allen Bradley  
**Brine Tank & Hypochlorite Storage Tank shall be appropriately sized for each application.**